



# YubiKey Bio Series

The gold standard in biometric authentication

Create phishing-resistant users and drive digital acceleration with passwordless login convenience and iron clad hardware security.

## Passwordless with biometrics delivers strong security and enhanced efficiency

Organizations around the world are increasingly putting security requirements in place for biometric-based authentication for their users. Modern enterprises want to enhance the user experience with a simplified workflow, ensure business continuity and accelerate their digital transformation in common scenarios that require frequent authentication.

In business scenarios such as shared workstation environments, where fast and secure task switching between users is critical, secure biometric authentication delivers greater speed and efficiency.

A secure passwordless login, backed by biometrics, not only protects the user and their data, but also increases productivity.

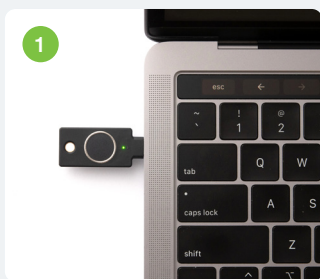


## The YubiKey Bio Series enables secure and frictionless passwordless login

With the YubiKey Bio Series, users can experience secure passwordless with greater convenience. The YubiKey Bio Series offers a FIDO-only option for modern cloud environments and Multi-protocol biometric keys for enterprises with a mix of modern and legacy applications, each offering USB-A and USB-C form factors to offer organizations maximum flexibility and choice for their users. This lineup has been designed to meet the most stringent security requirements as part of the industry-leading legacy of Yubico.

### Key capabilities include:

- Passwordless MFA and strong 2FA
- Biometric and PIN-based login
- Seamless login across devices and platform
- Support for desktop login and web authentication



1 Insert YubiKey.



2 LED blinks green and checks for matching user fingerprint.

Amber = mismatch



3 LED stops blinking when user successfully authenticated.

*Browser and software guidance are available along the way*



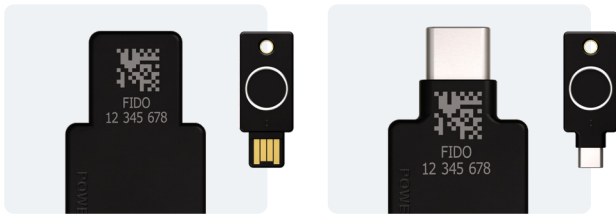
YubiKeys deployed in:

9 of the top 10 global technology companies

4 of the top 10 U.S. banks

5 of the top 10 global retailers

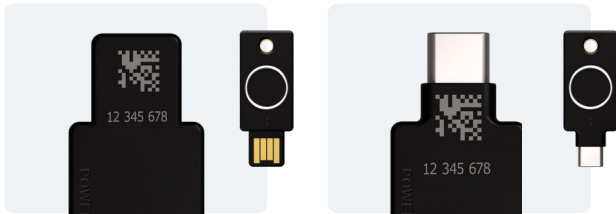
# YubiKey: Proven, easy-to-use security that's trusted by the world's leading companies



## YubiKey Bio Series - FIDO Edition

The YubiKey Bio Series – FIDO Edition offers two versatile options: the **YubiKey Bio - FIDO Edition (USB-A)** and the **YubiKey C Bio - FIDO Edition (USB-C)**.

Both keys deliver the convenience of biometric login with the added benefits of Yubico's hallmark security, reliability and durability assurances. Biometric fingerprint templates are stored in the secure element that helps protect them against physical attacks. The result is a single, trusted hardware-backed root of trust delivering a seamless login experience across different devices, operating systems, and applications. With support for both biometric- and PIN-based login, the YubiKey Bio Series - FIDO Edition leverages the full range of multi-factor authentication (MFA) capabilities outlined in the FIDO2 and WebAuthn standard specifications. And based on the latest 5.7 firmware, the YubiKey Bio Series - FIDO Edition is enriched with new enterprise-centric capabilities which helps enterprises fastrack to passwordless.



## YubiKey Bio Series - Multi-protocol Edition

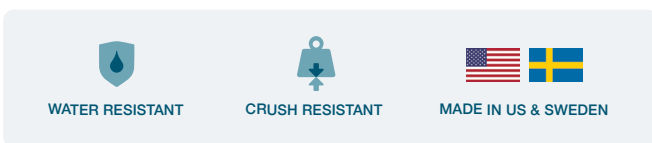
The YubiKey Bio Series – Multi-protocol Edition offers all of the benefits of the FIDO Edition lineup along with additional capabilities enabled through its multi-protocol capabilities. It offers two key options – **YubiKey Bio - Multi-protocol Edition (USB-A)** and **YubiKey C Bio - Multi-protocol Edition (USB-C)**.

Both keys offer FIDO/WebAuthn and Smart Card/PIV support and enable secure biometric and PIN-based passwordless login. Users can experience a secure frictionless login across

devices and platforms with a fingerprint sensor, all while reducing IT costs with the need for fewer calls to the help desk. With the YubiKey Bio Series - Multi-protocol Edition, modern enterprises can increase speed and user convenience with simplified authentication flows and reduced complexity for end users with managed corporate credentials. The YubiKey Bio Series - Multi-protocol Edition lineup is **available exclusively via YubiKey as a Service**, and included with the Compliance tier or as an add-on in the Advanced tier.<sup>1</sup>

YubiKey Bio Series - Multi-protocol Edition expands support to the following use cases:

- Desktop login on Microsoft Windows using Smart Card/PIV with fingerprint.
- Web authentication with FIDO2 using the same biometrics as desktop login.
- Enrollment to workstations using your technology partner<sup>2</sup> to centrally manage credentials.



<sup>1</sup> Not available in the YubiKey as a Service Base Tier

<sup>2</sup> HYPR currently provides the most streamlined experience